



INTEQ

Company : Nexus Energy

Well : Longtom-4 H

Interval : 2564.00 - 4666.86 meters

Created : 10/Aug/2008 5:13:05 AM

FORMATION EVALUATION LOG

Chromatograph Data

Methane ppm

10 | 100 | 1000 | 10000 | 100000

Ethane ppm

10 | 100 | 1000 | 10000 | 100000

Propane ppm

10 | 100 | 1000 | 10000 | 100000

iso-Butane ppm

10 | 100 | 1000 | 10000 | 100000

n-Butane ppm

10 | 100 | 1000 | 10000 | 100000

iso-Pentane ppm

10 | 100 | 1000 | 10000 | 100000

n-Pentane ppm

10 | 100 | 1000 | 10000 | 100000

Ditch Gas %

0.01 | 0.1 | 1 | 10 | 100

LITHOLOGY DESCRIPTIONS

Cuttings

INTERPRETED
LITHOLOGY

Analysis

DIRECT FLUOR

MD meters 1:500

2570

2580

2590

2600

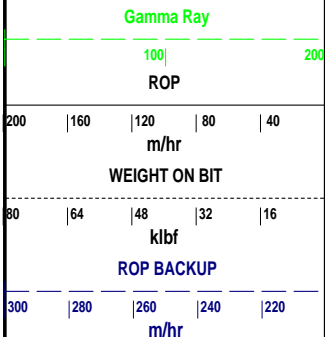
2610

2620

2630

2640

2



WOB: 11-39 klbf
RPM: 121-154
GPM: 1034-1082
SPP: 3630-3890 psi

24/07/2008

NB7: 241mm (9-1/2")
Make: Smith
Type: PDC/JY 2803
Jets: 7x16
Depth In: 2600.0 m
Depth Out: 2841.0 m
Drilled 241 m in 9.4hrs
Grade: 2-4 -BT-A-X-I-RO-CP

CLYST: m-dk gy, occ bn gy, mod
frm-frm, occ sft, occ hd, sbblky-blky,
occ lams, grd to Sltst

Drilled Longtom-4 P from
2600m - 2987m

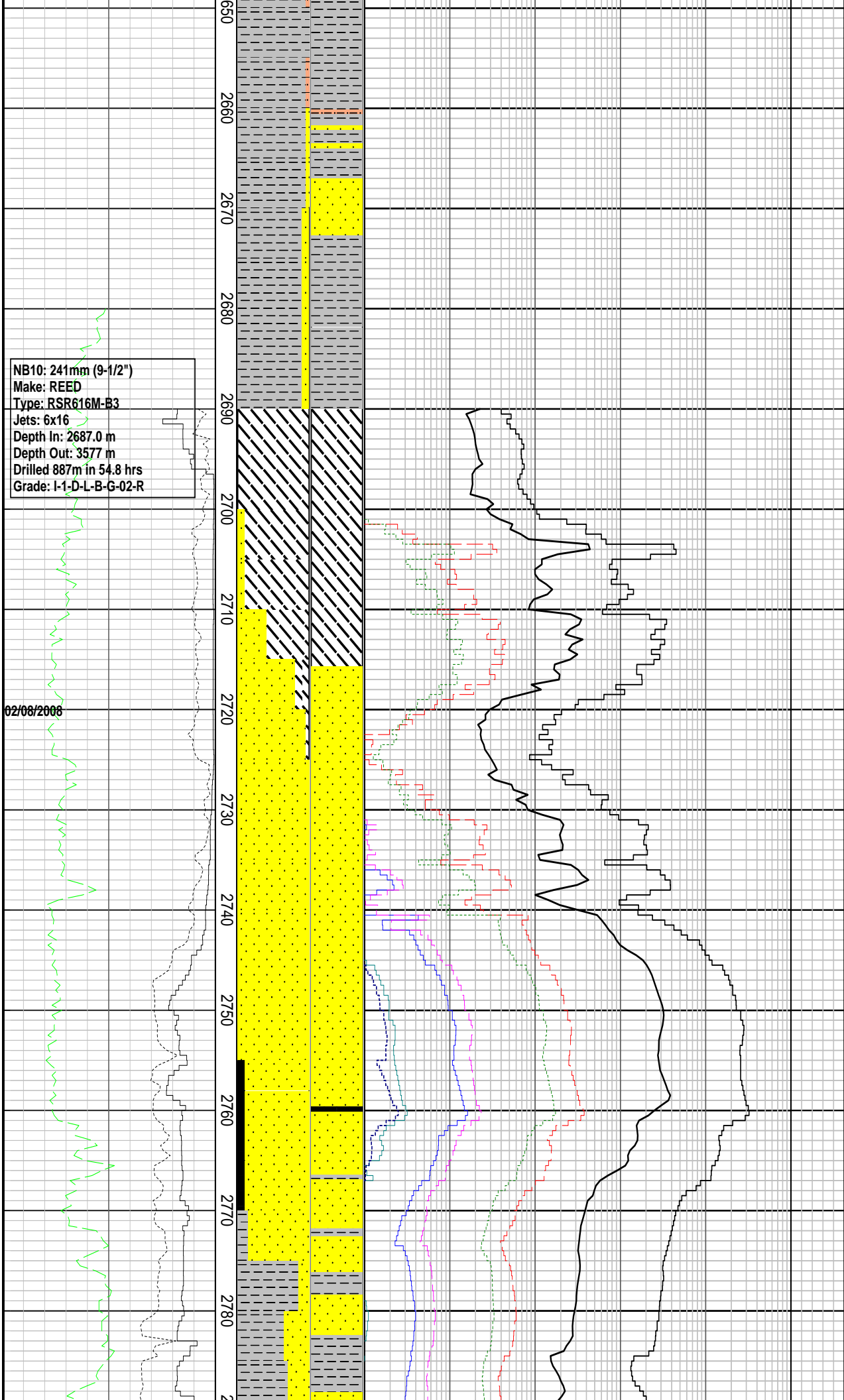
FIT @ 2604 m with 11.95ppg
EMW: 14.0 ppg @ 818 psi

MW: 12.2 ppg FV: 125
PV: 44 YP: 34
Gels: 13/18/21
O/W: 52.0/24.0

MD: 2621.5m Azi: 182.84°
TVD: 2364m Incl: 53.72°

SST: pred lse qtz gr, trnsi-trnsp, off
wh, v lt gy-lt gy i/p, fri, vf-f, occ m gr,
sb ang-rndd, prly-mod srt, occ wl srt,
arg mtrx, calc cmt, fr vis por, no shw

SLTST: v lt gy-lt gy, v sft-sft, occ frm,
sbblky-blky, grd to vf SST



NB10: 241mm (9-1/2")
Make: REED
Type: RSR616M-B3
Jets: 6x16
Depth In: 2687.0 m
Depth Out: 3577 m
Drilled 887m in 54.8 hrs
Grade: I-1-D-L-B-G-02-R

MD: 2651.3m Azi: 183.55°
TVD: 2381.6m Incl: 53.37°

CLYST: m gy-m lt gy, brnsh gy, occ
grnsh gy, sft-frm, sbblky-blky, slty

SST: lt gy-m lt gy, fri, vf-f gr, sb rndd,
prly-mod srt, arg mtrx, calc cmt, fr vis
por, no shw

MD: 2681.00m Azi: 184.22°
TVD: 2399.5m Incl: 52.5°

Tag Cement & Kick off @2690m,
start drilling Longtom-4 H on 02
Aug 08

MW: 12.00 ppg FV: 123
PV: 37 YP: 36
Gels: 12/18/21
OW: 67.5/32.5

MD: 2704.04m Azi: 184.56°
TVD: 2413.7m Incl: 51.56°

SST: v lt gy-lt gy, dk gy i/p, trnsi-trnsp
occ opq, uncon-fri agg, vf-f, crs gr
i/p, occ m gr, lse qtz gr,
sbang-sbrndd, sbsph, pr-mod srt, arg
mtrx, calc cmt, tr carb
mat, tr glauc, pr inf por, no shw

MD: 2733.77m Azi: 181.87°
TVD: 2432.5m Incl: 49.85°

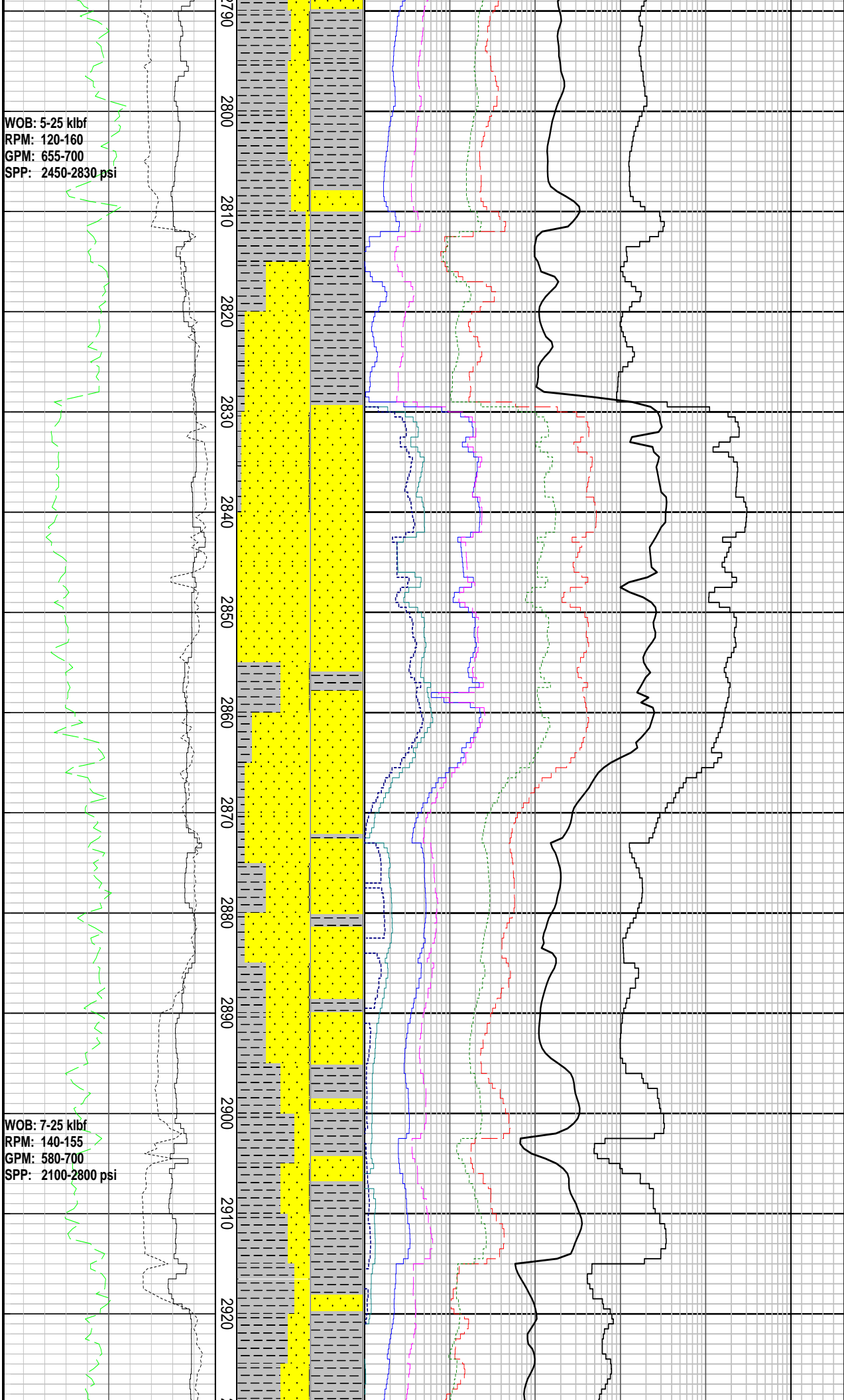
SST: v lt gy-lt gy, dk gy i/p, occ wh,
trnsi-trnsp, occ opq, uncon-fri agg,
vf-f, crs gr i/p, occ m gr, lse qtz gr,
sbang-sbrndd, sbsph, pr-mod srt, arg
mtrx, calc cmt, tr carb mat, tr glauc, pr
inf por, no shw

COAL: blk, frm, blk-sbblky,
erthy-sbvit lus, brit

MD: 2763.58m Azi: 177.62°
TVD: 2451.5m Incl: 51.38°

CLYST: m dk gy-dk gy, mod frm-frm,
occ hd, sbblky-blky, grd to Sltst

SST: v lt gy-lt gy, dk gy i/p, occ
wh, trnsi-trnsp, occ opq, uncon-fri
agg, vf-f, crs gr i/p, occ m gr, lse qtz
gr, sbang-sbrndd, sbsph, pr-mod srt,
arg mtrx, calc cmt, tr carb mat, tr



glauc, pr inf por, no shw

MD: 2792.00m Azi: 176.31°
TVD: 2469.1m Incl: 53.1°

CLYST: m dk gy-dk gy, mod frm-frm, occ hd, sbbiky-blky, grd to Slst

MD: 2820.01m Azi: 176.82°
TVD: 2485.5m Incl: 54.07°

SST: lt gy, trnsl-trnsp, m-crs gr, occ v crs gr, grnsh gy, mod rdsh brn lse qtz gr, sbang-sbrnd, sbsph, mod srt, lt gy agg i/p, frm-fri, tr arg mtrx, tr carb mat,pr vis por, no shw

MD: 2850.81m Azi: 179.97°
TVD: 2503.4m Incl: 54.91°

CLYST: m dk gy, frm-hd, sbbiky-blky, grd to Slst

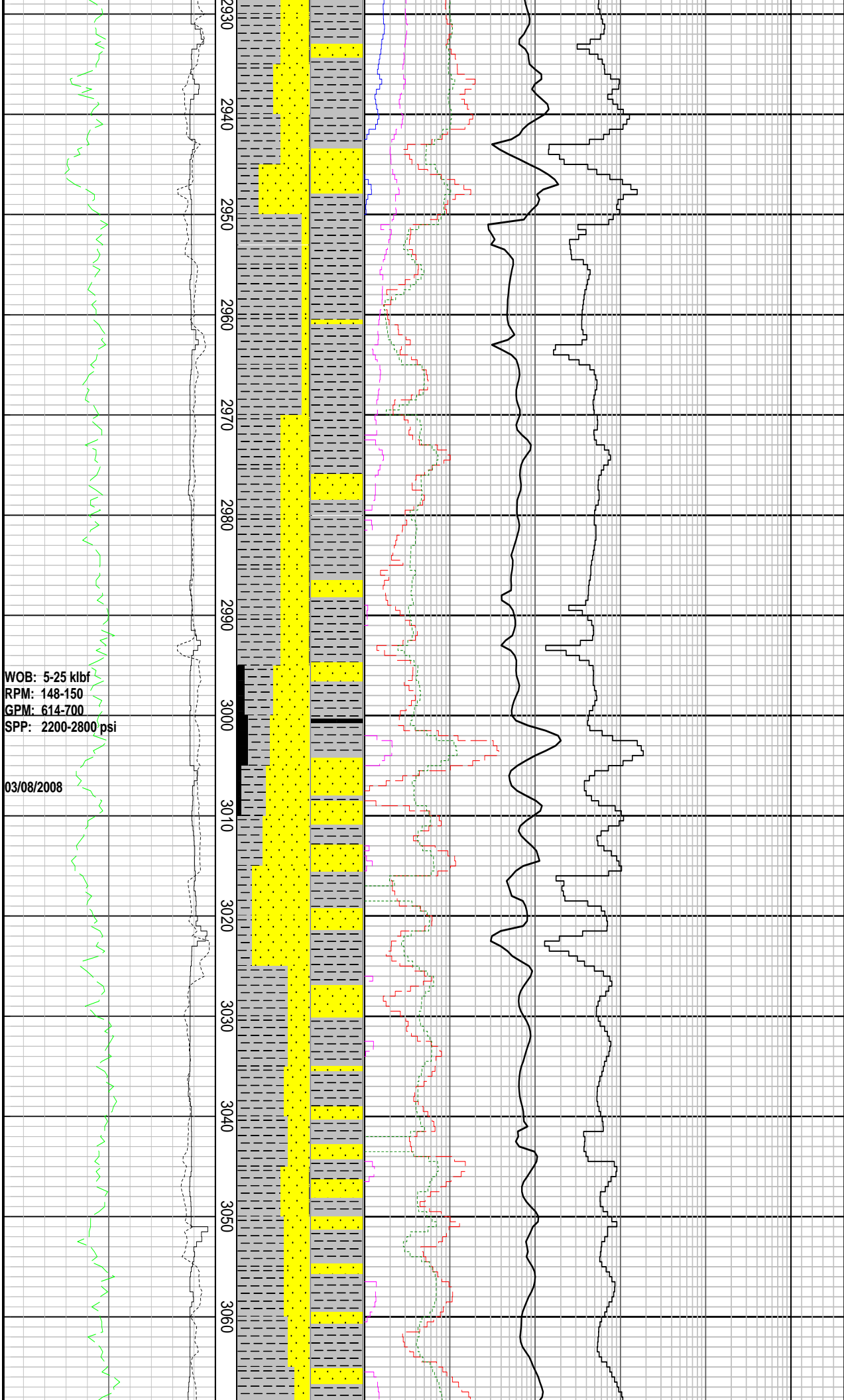
MW: 12.00 ppg FV: 96
PV: 45 YP: 35
Gels: 14/25/29
O/W: 69.6/30.4

SST: lt gy, clr, vf-f, occ crs gr, sbang-sbrndd, sbsph, mod wl srt, tr arg mtrx i/p, pr vis por, no shw

MD: 2881.69m Azi: 185.74°
TVD: 2520.7m Incl: 57.25°

CLYST: m gy-dk gy, frm-hd, sbbiky-sbfiss, slty, grd to Slst

MD: 2911.49m Azi: 188.17°
TVD: 2535.6m Incl: 62.80°



CLYST: m gy-dk gy, occ gysh blk, sft-frm, occ hd, sbblky, sbfiss, amor i/p

MD: 2941.41m Azi: 188.76°
TVD: 2548.7m Incl: 65.11°

SST: lt gy, trnsl, f-crs gr, occ v crs gr, sbang-sbrndd, sbsph, mod srt, pr vis por, no shw

MW: 12.00 ppg FV: 92
PV: 45 YP: 32
Gels: 14/25/29
O/W:70/30

CLYST: lt gy- dk gy, frm-hd, sbblky-blky, occ sbfiss, amor

SST: dk-dk m gy, lt gy i/p, occ wh, trnsl- trnsp, occ opq, fri-mod hd, uncons i/p, vf-f gr, crs gr i/p, sbang-sbrndd, ang i/p, sbelong-sbsph, pr-mod srt, calc cmt, tr slt, tr glauc, pr inf por, no shw

CLYST: lt gy- dk gy, frm-hd, sft i/p, sbblky-blky, occ sbfiss, amor, n calc, grd g to Slst

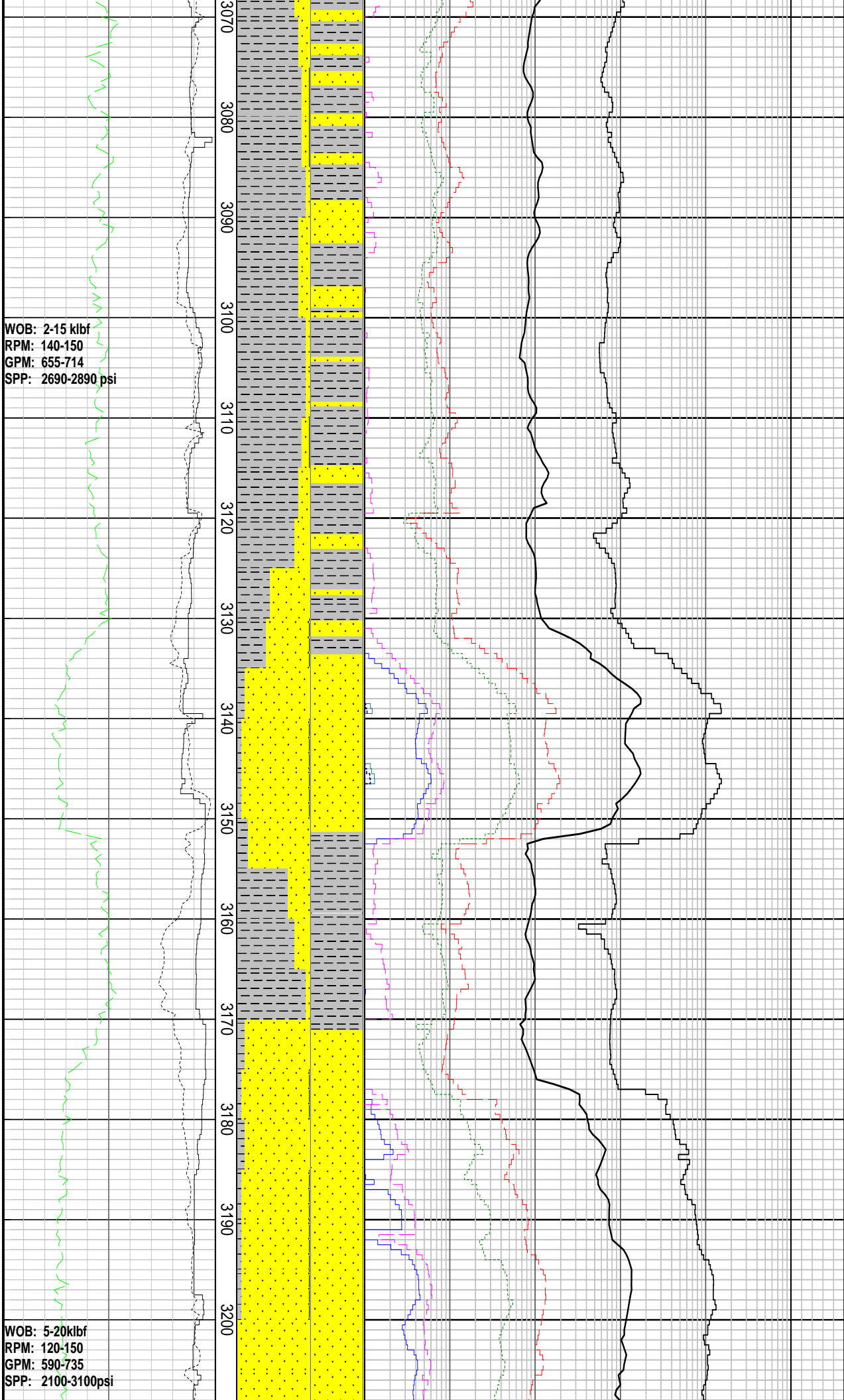
COAL: blk, frm, blky-sbblky, erthy-sbvit lus, brit

MD: 3016.23m Azi: 189.15°
TVD: 2577.3m Incl: 69.92°

SST: dk-dk m gy, lt gy i/p, occ wh, trnsl-trnsp, occ opq, fri-mod hd, uncons i/p, vf-f gr, crs gr i/p, sbang-sbrndd, ang i/p, sbelong-sbsph, pr-mod srt, calc cmt, tr slt, tr carb mat, tr glauc, pr inf por, no shw

CLYST: lt gy- dk gy, frm-hd, sft i/p, sbblky-blky, occ sbfiss, amor, n calc, grd g to Slst

SST: dk-dk m gy, lt gy i/p, occ wh, trnsl-trnsp, occ opq, fri-mod hd, vf-f gr, crs gr i/p, sbang-sbrndd, ang i/p, sbsph, pr-mod srt, calc cmt, tr slt, tr carb mat, tr glauc, pr inf por, no shw



carb mat, tr glauc, tr arg mtrx, tr miclam, pr inf por, no shw

MD: 3076.35m Azi: 190.05°
TVD: 2596.3m Incl: 72.83°

SST: dk-dk m gy, lt gy i/p, occ wh, trnsl-trnsp, occ opq, fri-mod hd, vf-f gr, crs gr i/p, sbang-sbrndd, ang i/p, sbsph, pr-mod srt, calc cmt, tr silt, tr carb mat, tr glauc, tr arg mtrx, tr miclam, pr inf por, no shw

MD: 3106.22m Azi: 185.49°
TVD: 2605.1m Incl: 72.92°

CLYST: lt gy- dk gy, frm-hd, sft i/p, sbblky-blky, occ sbfiss, amor, n calc, grdg to Sltst

SST: dk-dk m gy, lt gy i/p, occ wh, trnsl-trnsp, occ opq, fri-mod hd, vf-f gr, crs gr i/p, sbang-sbrndd, ang i/p, sbsph, pr-mod srt, calc cmt, tr silt, tr carb mat, tr glauc, tr arg mtrx, tr miclam, pr inf por, no shw

MD: 3136.04m Azi: 186.22°
TVD: 2613.10m Incl: 75.98°

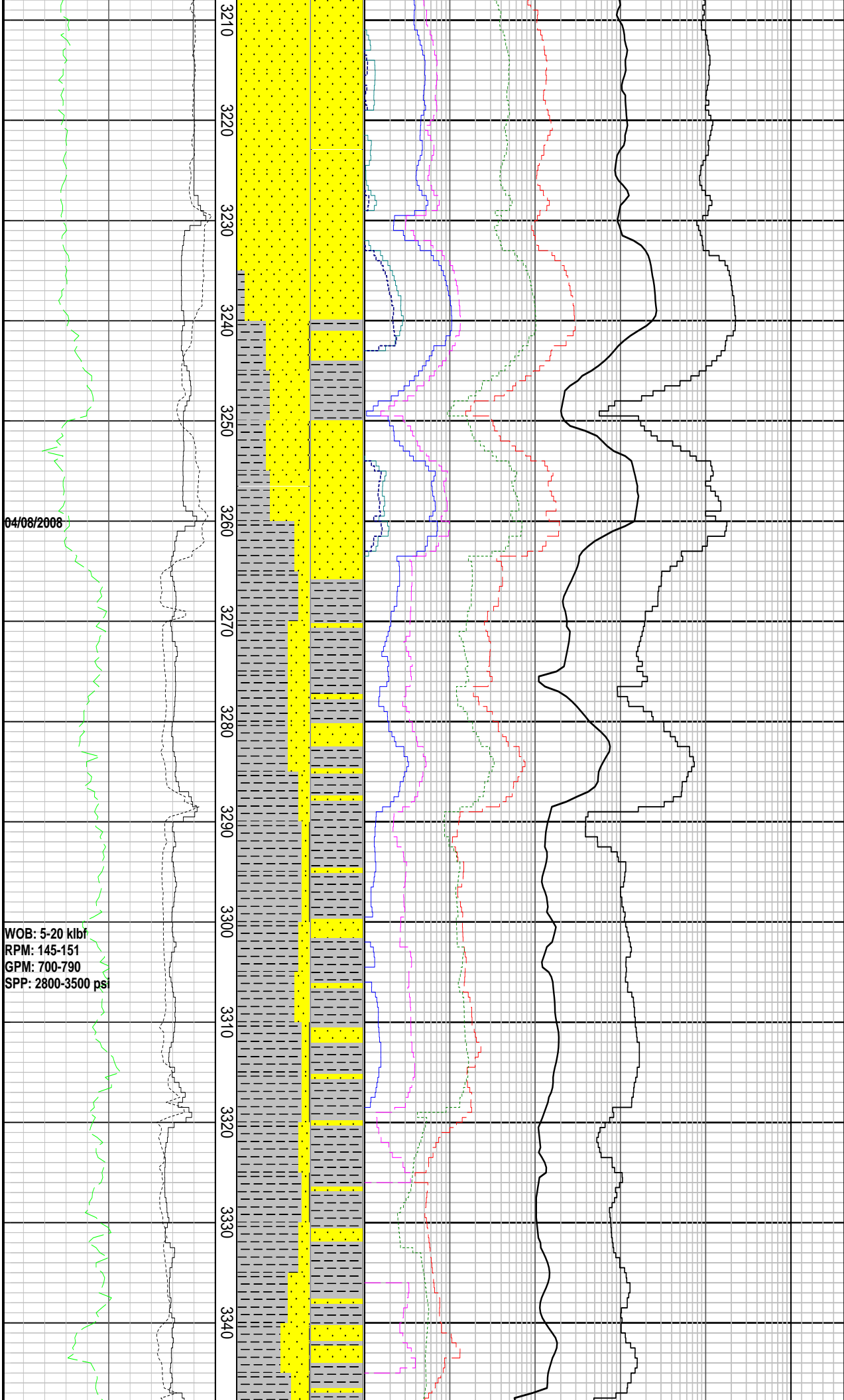
SST: lt gy, trnsl, f-crs gr, occ v crs gr, pred frm agg, sbang-sbrndd, sbsph, pr-mod srt, tr arg mtrx, pr vis & inf por, no shw

MD: 3164.24m Azi: 185.24°
TVD: 2618.9m Incl: 80.13°

CLYST: m dk gy-dk gy, sft-frm, sbblky-blky, amor

MD: 3194.93m Azi: 185.98°
TVD: 2624.3m Incl: 79.46°

SST: lt gy, trnsl-trnsp, f-crs gr, occ v crs gr, sbang-sbrndd, sbsph, pr srt, tr arg mtrx, tr flsp gr i/p, pr vis por, no shw



MD: 3224.35m Azi: 184.32°
TVD: 2629.2m Incl: 81.52°

SST: v lt gy-lt gy, trnsl-trnsp, f-crs gr,
occ v crs gr, sbang-sbrnnd, sbsph,
mod-wl srt, tr arg mtrx, sil cmt, tr
glauc, pr vis por, no shw

CLYST: dk gy-m dk gy, occ lt gy,
sft-frm, hd i/p, sbblky-blky, amor i/p, n
calc, tr carb lit

MD: 3254.13m Azi: 184.05°
TVD: 2632.8m Incl: 84.39°

SST: v lt gy-lt gy, trnsl-trnsp, f-crs gr,
occ v crs gr, sbang-sbrnnd, sbsph,
mod-wl srt, tr arg mtrx, sil cmt, tr
glauc, rr dissep pyr, pr vis por, no
shw

CLYST: dk gy-m dk gy, occ lt gy,
sft-frm, hd i/p, sbblky-blky, amor i/p, n
calc, tr carb lit

MD: 3283.78m Azi: 180.52°
TVD: 2635.0m Incl: 87.22°

CLYST: dk gy-m dk gy, occ lt gy,
sft-frm, hd i/p, sbblky-blky, amor i/p, n
calc, tr carb lit

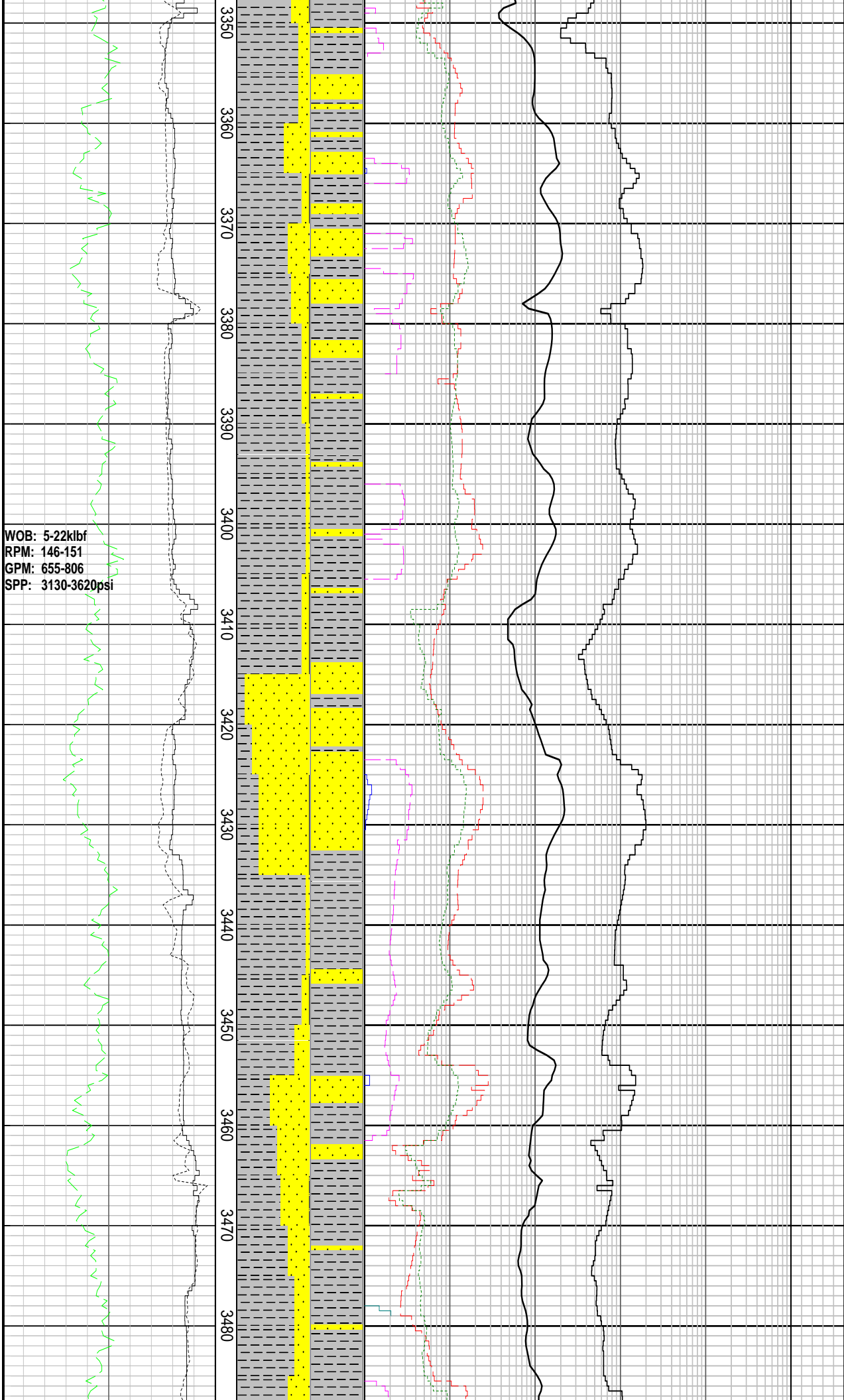
MD: 3313.51m Azi: 179.55°
TVD: 2635.6m Incl: 90.41°

MW: 12.00 ppg FV: 80
PV: 47 YP: 31
Gels: 14/25/29
O/W: 74.4/25.6

SST: v lt gy-lt gy, trnsl-trnsp, f-crs gr,
occ v crs gr, sbang-sbrnnd, sbsph,
mod-wl srt, tr arg mtrx, sil cmt, tr
glauc, pr vis por, no shw

MD: 3343.47m Azi: 182.41°
TVD: 2634.7m Incl: 93.13°

WOB: 5-22klbf
RPM: 146-151
GPM: 655-806
SPP: 3130-3620psi



CLYST: dk gy-m dk gy, occ lt gy, sft-frm, hd i/p, sbblky-blky, amor i/p, n calc, tr carb lit

MD: 3373.36m Azi: 181.60°
TVD: 2632.8m Incl: 94.02°

CLYST: dk gy-m dk gy, sft-frm, blky, n calc

MD: 3402.75m Azi: 178.76°
TVD: 2630.8m Incl: 93.92°

SST: v lt gy-lt gy, trnsi-trnsp, f-crs gr, occ v crs gr, sbang-sbrnnd, sbsph, pr-mod srt, tr arg mtrx, tr glauc, pr vis por, no shw

MD: 3431.88m Azi: 178.07°
TVD: 2629.5m Incl: 91.13°

CLYST: dk gy-m dk gy, sft-frm, blky, n calc

SST: v lt gy-lt gy, trnsi-trnsp, f-crs gr, occ v crs gr, sbang-sbrnnd, sbsph, pr-mod srt, tr arg mtrx, tr glauc, pr vis por, no shw

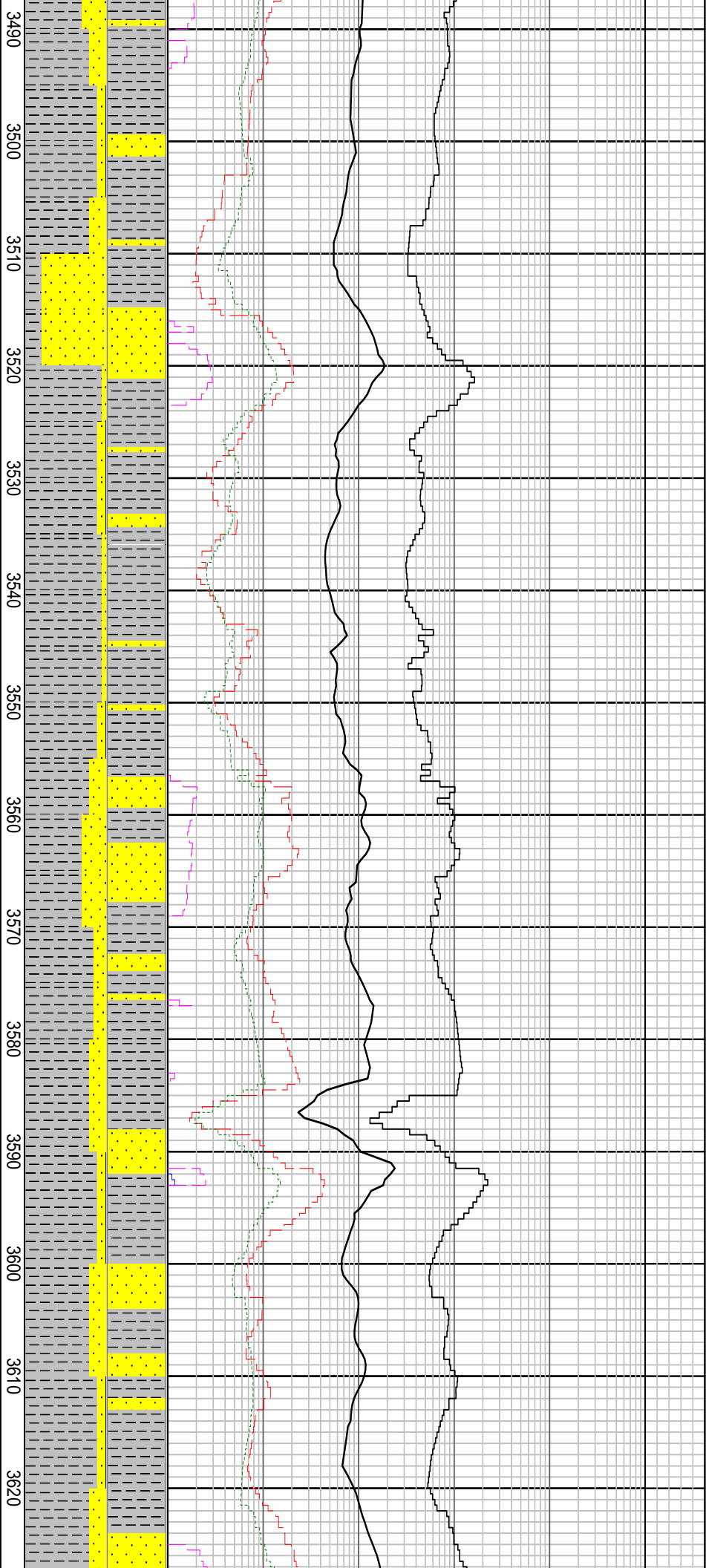
MD: 3461.34m Azi: 178.76°
TVD: 2628.8m Incl: 91.68°

CLYST: m lt-m dk gy, sft-frm, blky, tr carb mat, n calc

WOB: 3-21klbf
RPM: 146-149
GPM: 723-792
SPP: 3110-3580psi

RR11: 241mm (9-1/2")
Make: REED
Type: RSR616M-B3
Jets: 6x16
Depth In: 3577m
Depth Out: xxxx m
Drilled xxxm in xx.x hrs
Grade: xxxxx

WOB: 3-19klbf
RPM: 133-149
GPM: 625-765
SPP: 2424-3390psi



MD: 3492.03m Azi: 180.60°
TVD: 2627.9m Incl: 91.51°

MW: 12.00 ppg FV: 92
PV: 44 YP: 27
Gels: 14/22/27
O/W: 74.4/25.6

SST: v lt gy-lt gy, trnsl-trnsp, f-crs gr,
occ v crs gr, sbang-sbrnrd, sbsph,
pr-mod srt, tr arg mtrx, tr glauc, pr vis
por, no shw

MD: 3521.63m Azi: 178.88°
TVD: 2627.2m Incl: 91.27°

CLYST: m lt-m dk gy, sft-frm, blk, tr
carb mat, n calc

MD: 3551.39m Azi: 180.83°
TVD: 2626.5m Incl: 91.44°

SST: v lt gy-lt gy, trnsl-trnsp, f-crs gr,
occ v crs gr, sbang-sbrnrd, sbsph,
pr-mod srt, tr arg mtrx, tr glauc, pr vis
por, no shw

MD: 3564.74m Azi: 180.85°
TVD: 2626.2m Incl: 91.37°

Bit Trip @ 3577.0m

MW: 12.01 ppg FV: 110
PV: 43 YP: 31
Gels: 14/23/27
O/W: 75/25

SST: v lt gy-lt gy, occ wh, clr-trnsl,
occ opq, f-crs gr, occ v crs gr,
sbang-sbrnrd, sbsph, pr-mod srt, tr
arg mtrx, tr glauc, tr blk lit, pr vis por,
no shw

MD: 3594.59m Azi: 180.97°
TVD: 2625.5m Incl: 91.46°

CLYST: m dk gy-dk gy, sft-frm,
sbbiky-blky, tr carb mat, n calc

WOB: 2-20klbf
RPM: 138-140
GPM: 579-660
SPP: 2210-2860psi

Degasser on

SST: lt olv gy-m lt gy, clr-trnsl, fri, vf-f
gr, occ m gr, sbang-sbrndd, sbsph, w
srt, pr-mod calc cmt, tr blk lit, pr vis
por, no shw

MD: 3653.86m Azi: 184.27°
TVD: 2623.9m Incl: 91.66°

CLYST: m gy-m dk gy, sft frm,
sbbiky-blky, fiss i/p, n calc

MW: 12.00 ppg FV: 80
PV: 44 YP: 27
Gels: 14/22/27
OW: 72.5/27.5

MD: 3684.08m Azi: 183.77°
TVD: 2623.4m Incl: 90.26°

SST: olv gy, occ or gr, clr-trnsl, fri,
vf-m gr, ang-sbang, sbsph, mod srt,
wk calc cmt, tr blk lith, tr glau, pr vis
por, no shw

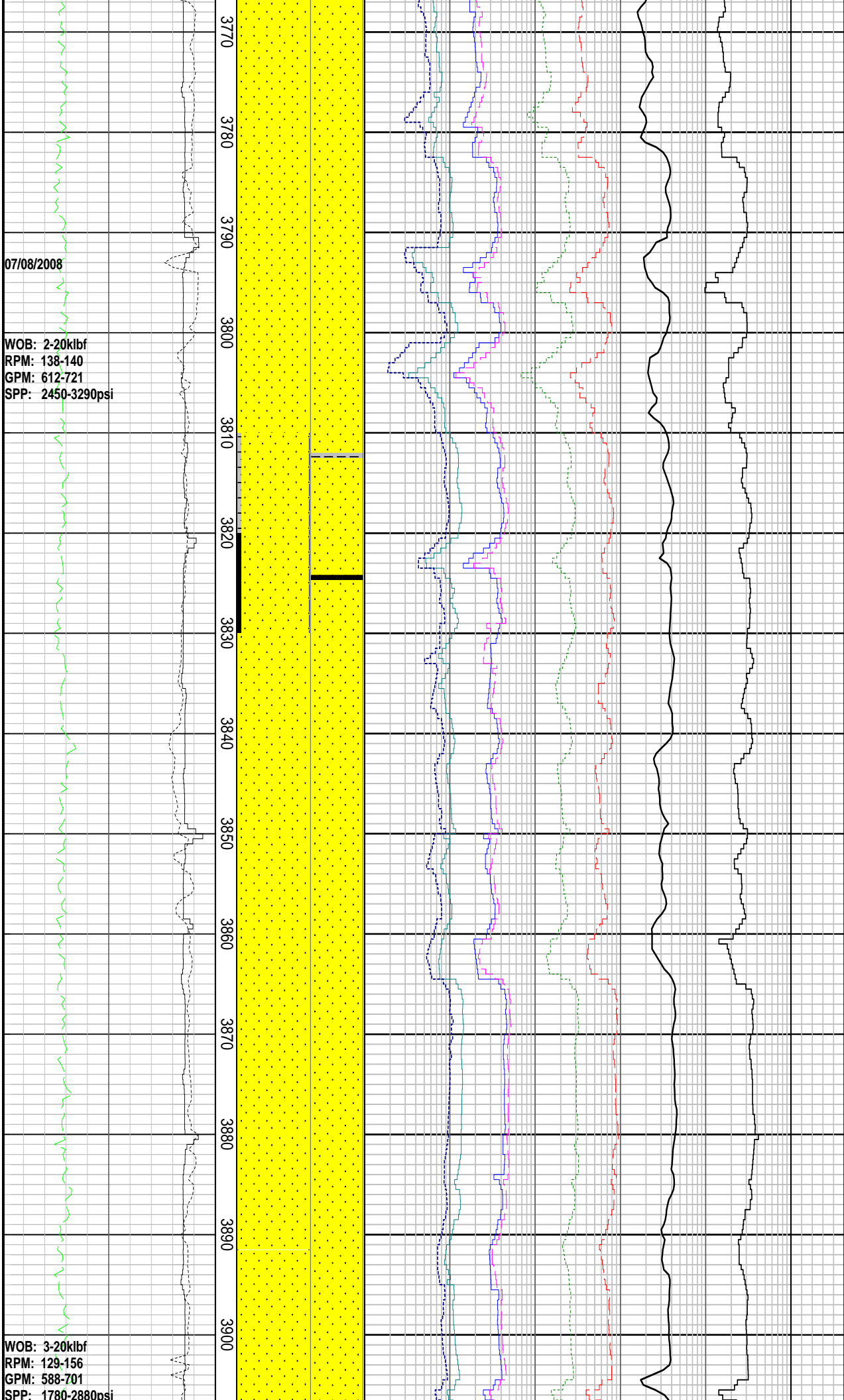
MD: 3711.90m Azi: 185.04°
TVD: 2623.4m Incl: 89.74°

MW: 12.10 ppg FV: 81
PV: 42 YP: 32
Gels: 14/25/-
OW: 72.5/27.5

SST: olv gy, m lt gy, occ or gr,
clr-trnsl, fri, vf-m gr, sbang-sbrndd,
sbsph, mod srt, wk calc cmt, tr blk
lith, tr glau, pr vis por, no shw

MD: 3740.99m Azi: 184.85°
TVD: 2623.8m Incl: 88.54°

SST: olv gy, occ or gr, clr-trnsl, fri,
vf-m gr, ang-sbang, sbsph, mod srt,
wk calc cmt, tr blk lit, tr glau, pr vis
por, no shw



MD: 3770.39m Azi: 184.63°
TVD: 2625.3m Incl: 85.50°

SST: olv gy-lt olv gy, occ or gr,
clr-trnsl, occ opq, fri, vf-m gr, crs gr
i/p, sbang-sbrndd, sbsph, pr-mod srt,
wk calc cmt, tr blk lith, tr glau, pr inf
por, no shw

MD: 3799.79m Azi: 184.62°
TVD: 2627.8m Incl: 83.81°

SST: olv gy-lt olv gy, occ or gr,
clr-trnsl, occ opq, fri, vf-m gr, crs gr
i/p, sbang-sbrndd, sbsph, pr-mod srt,
wk calc cmt, tr blk lith, tr glau, pr inf
por, no shw

MD: 3829.12m Azi: 183.90°
TVD: 2631.1m Incl: 82.94°

COAL: blk, frm, blk-sbblky,
erthy-sbvlt lus, brit

SST: olv gy-lt olv gy, occ or gr,
clr-trnsl, occ opq, fri, vf-m gr, crs gr
i/p, sbang-sbrndd, sbsph, pr-mod srt,
wk calc cmt, tr blk lith, tr glau, pr inf
por, no shw

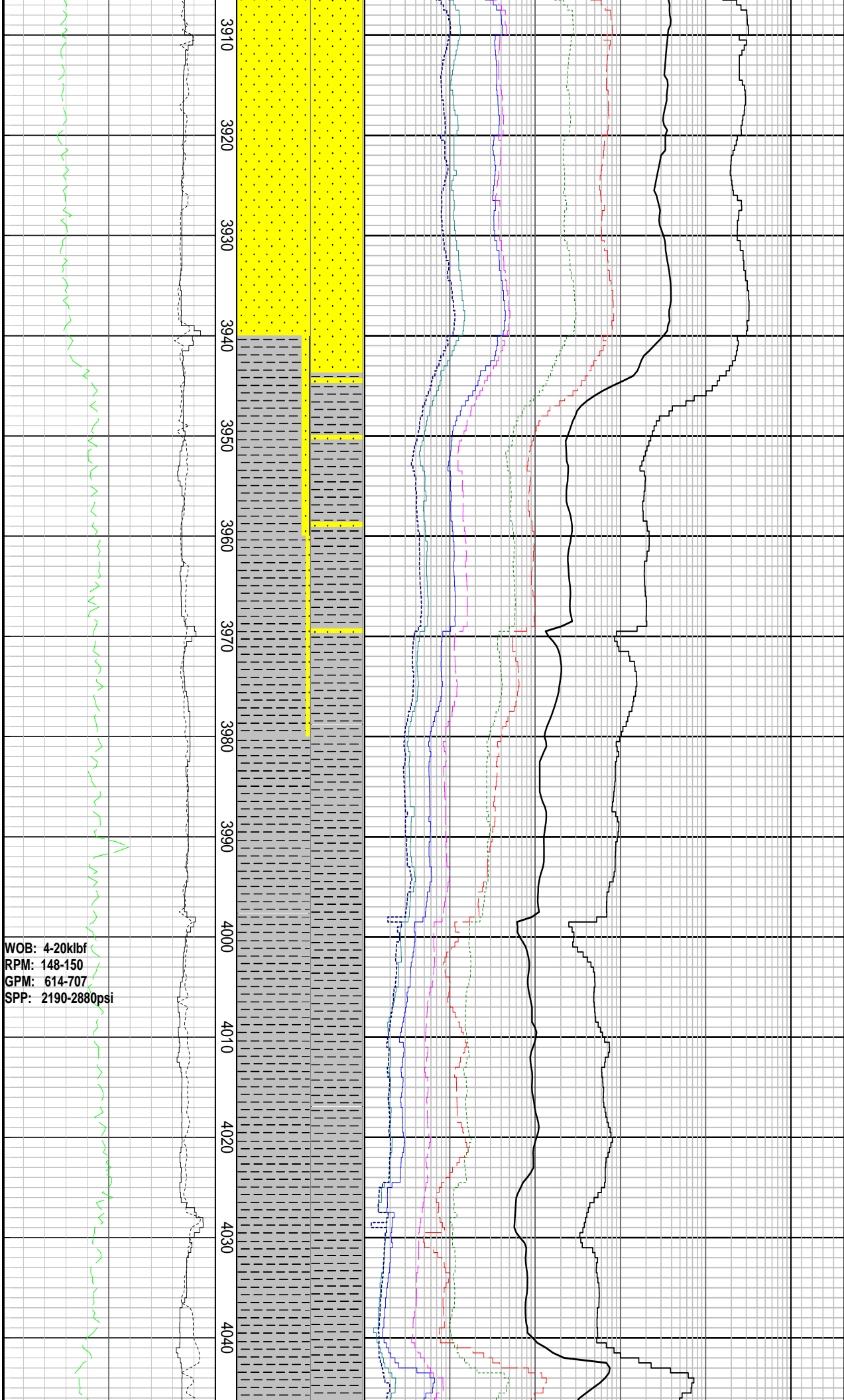
MW: 12.00 ppg FV: 80
PV: 44 YP: 33
Gels: 15/25/29
OW: 72.5/27.5

MD: 3859.22m Azi: 183.23°
TVD: 2634.6m Incl: 84.01°

SST: olv gy-lt olv gy, occ or gr,
clr-trnsl, occ opq, fri, vf-m gr, crs gr
i/p, sbang-sbrndd, sbsph, pr-mod srt,
wk calc cmt, tr blk lith, tr glau, pr inf
por, no shw

MD: 3888.65m Azi: 183.06°
TVD: 2637.1m Incl: 86.73°

SST: olv gy-lt olv gy, occ or gr,
clr-trnsl, occ opq, fri, vf-m gr, crs gr
i/p, sbang-sbrndd, sbsph, pr-mod srt,
wk calc cmt, tr blk lith, tr glau, pr inf
por, no shw



WOB: 4-20klbf
RPM: 148-150
GPM: 614-707
SPP: 2190-2880psi

MD: 3918.67m Azi: 185.50°
TVD: 2638.4m Incl: 88.74°

SST: olv gy-lt olv gy, occ or gr,
clr-trnsl, occ opq, fri, vf-m gr, crs gr
i/p, sbang-sbrndd, sbsph, pr-mod srt,
wk calc cmt, tr blk lith, tr glau, pr inf
por, no shw

MD: 3948.65m Azi: 186.27°
TVD: 2638.9m Incl: 89.63°

CLYST: m dk gy-dk gy, sft-frm,
sbbiky-blky, tr carb mat, n calc, grd to
Slst

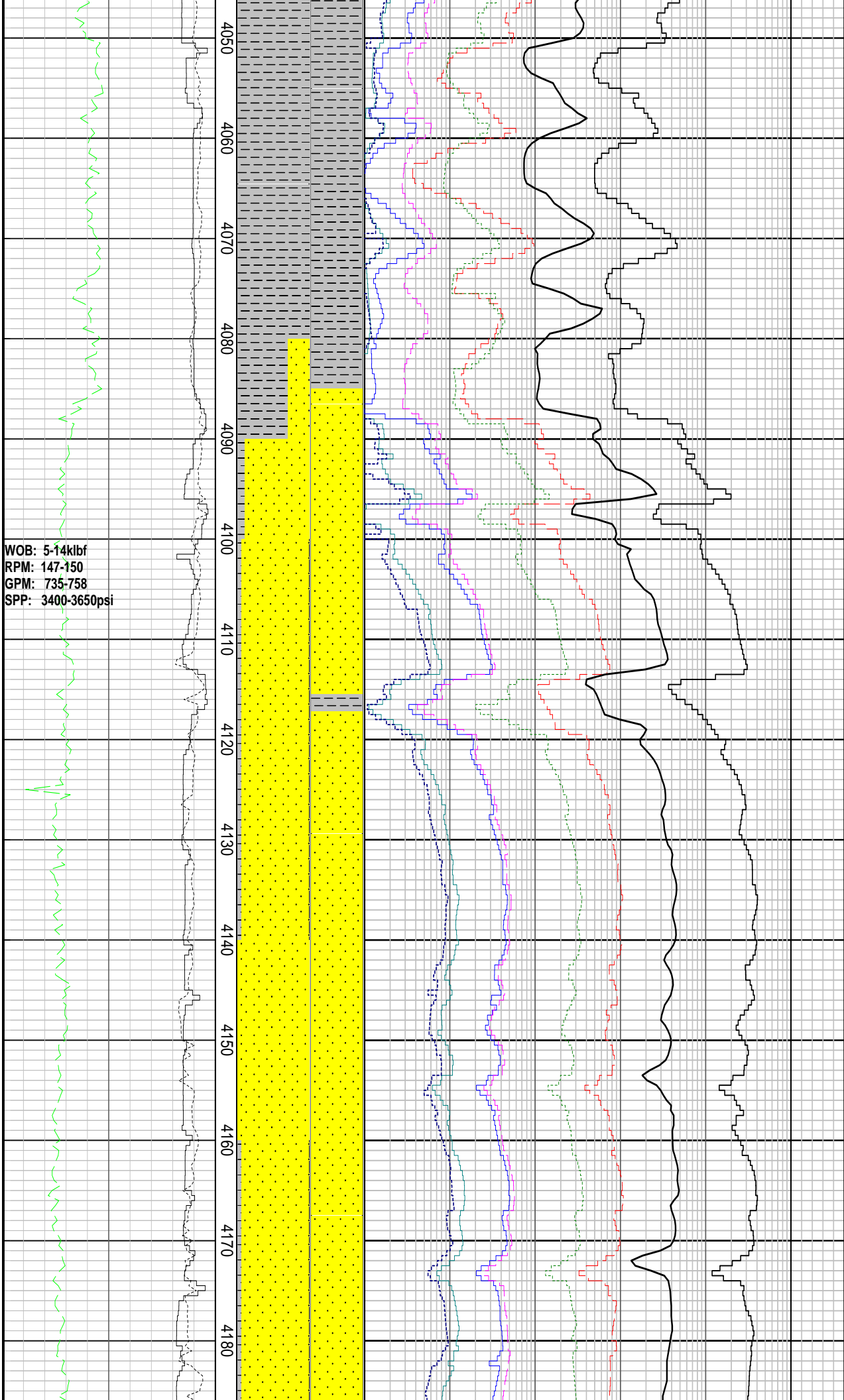
MD: 3977.71m Azi: 185.58°
TVD: 2639.7m Incl: 86.96°

CLYST: m gy-olv gy, sft-frm,
sbbiky-blky, n calc, grd to Slst

MD: 4006.54m Azi: 184.14°
TVD: 2642.1m Incl: 83.81°

CLYST: m gy-olv gy, sft-frm,
sbbiky-blky, n calc, grd to Slst

MD: 4035.61m Azi: 183.23°
TVD: 2645.6m Incl: 82.10°



WOB: 5-17klbf
RPM: 144-150
GPM: 661-758
SPP: 2903-3888psi

08/08/2008

WOB: 5-20klbf
RPM: 144-153
GPM: 767-770
SPP: 3350-3900psi

CLYST: brnsh blk, olv gy, m lt gy i/p,
sft frm, blk-sbblky, n calc, tr carb
mat

MD: 4212.97m Azi: 190.26°
TVD: 2674.5m Incl: 85.21°

CLYST: brnsh blk, olv gy, m lt gy i/p,
sft frm, blk-sbblky, tr carb mat, n
calc

MD: 4242.27m Azi: 193.94°
TVD: 2675.8m Incl: 89.34°

SST: m lt gy-lt gy, occ wh, tr Fe stng,
trnsp-trnsl, occ opq, fri-hd, v hd i/p,
vf-m gr, sbang-sbrndd, sbsph, pr-mod
srt, calc cmt, tr glau, tr arg mtrx, abt
frag, tr micrlam, pr inh por, no shw
coal

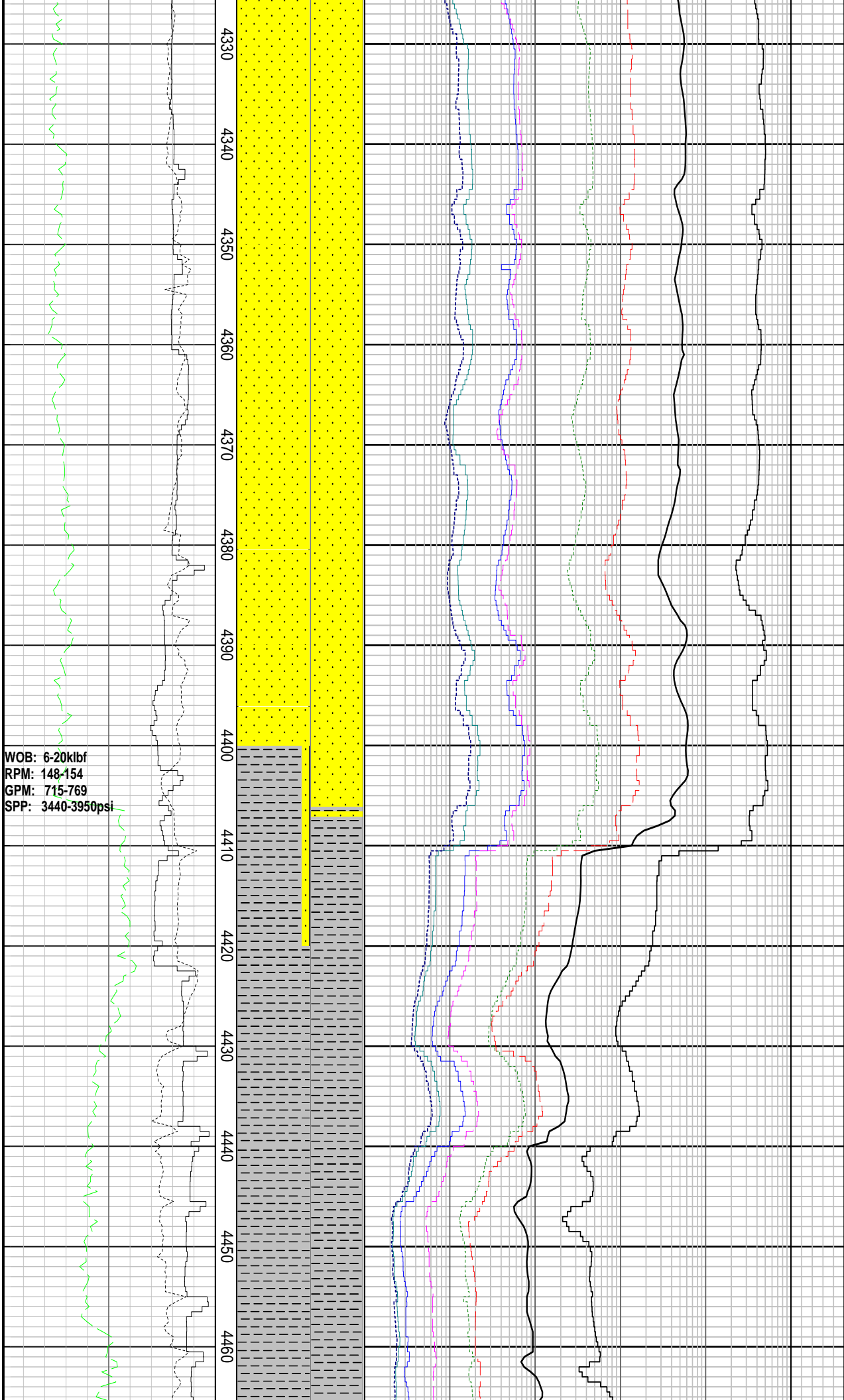
MD: 4270.99m Azi: 195.73°
TVD: 2675.1m Incl: 92.69°

SST: m lt gy-lt gy, occ wh, tr Fe stng,
trnsp-trnsl, occ opq, fri-hd, v hd i/p,
vf-m gr, sbang-sbrndd, sbsph, pr-mod
srt, calc cmt, tr glau, tr arg mtrx, abt
frag, tr micrlam, pr inh por, no shw
coal

MW: 12.00 ppg FV: 73
PV: 47 YP: 40
Gels: 18/32/34
O/W: 74.4/25.6

MD: 4301.34m Azi: 195.79°
TVD: 2673.9m Incl: 92.03°

SST: m lt gy-lt gy, occ wh, tr Fe stng,
trnsp-trnsl, occ opq, fri-hd, v hd i/p,
vf-m gr, sbang-sbrndd, sbsph, pr-mod
srt, calc cmt, tr glau, tr arg mtrx, abt
frag, tr micrlam, pr inh por, no shw
coal



WOB: 6-20klbf
RPM: 148-154
GPM: 715-769
SPP: 3440-3950psi

MD: 4331.01m Azi: 195.62°
TVD: 2672.6m Incl: 92.98°

SST: m lt gy-lt gy, occ wh, tr Fe stng, trnsp-trnsl, occ opq, fri-hd, v hd i/p, vf-m gr, sbang-sbrnnd, sbsph, pr-mod, srt, calc cmt, tr glau, tr arg mtrx, abt, frag, tr micrlam, pr inf por, no shw

MD: 4360.69m Azi: 195.41°
TVD: 2671.6m Incl: 90.97°

SST: m lt gy-lt gy, occ wh, tr Fe stng, trnsp-trnsl, occ opq, fri-hd, v hd i/p, vf-m gr, sbang-sbrnnd, sbsph, pr-mod, srt, calc cmt, tr glau, tr arg mtrx, abt, frag, tr micrlam, pr inf por, no shw

MD: 4390.61m Azi: 193.25°
TVD: 2671.9m Incl: 87.74°

CLYST: brnsh blk, olv gy, m lt gy i/p, sft-frm, blk-sbbkly, tr carb mat, n calc

MD: 4419.25m Azi: 189.93°
TVD: 2673.8m Incl: 84.58°

CLYST: m dk gy-dk gy, sft-frm, occ hd, blk-sbbkly, tr carb mat, n calc, grd to Slst

MD: 4448.12m Azi: 190.34°
TVD: 2678.7m Incl: 85.64°

CLYST: m dk gy-dk gy, sft-frm, occ

hd, blk-y-sbbiky, tr carb mat, n calc
grd to Sltst

MD: 4478.07m	Azi: 191.52°
TVD: 2678.7m	Incl: 84.87°

CLYST: m dk gy-dk gy, sft frm, occ
hd, blk-y-sbblky, tr carb mat, n calc,
grd to Sltst

MD: 4507.60m	Azi: 193.02°
TVD: 2681.4m	Incl: 84.61°

MW: 12.00 ppg FV: 77
PV: 60 YP: 35
Gels: 15/24/27
O/W: 73.4/26.6

CLYST: m dk gy-dk gy, sft frm, occ
hd, blk-y-sbblky, tr carb mat, n calc,
grd to Slst

MD: 4538.99m	Azi: 192.67°
TVD: 2684.4m	Incl: 84.55°

CLYST: brnsh gy, olv gy, frm-hd,
sbbiky-sbang, tr carb mat, n calc, grd
to Slstst

MW: 12.00 ppg	FV: 75
PV: 60	YP: 33
Gels: 15/24/27	
O/W: 73.4/26.6	

MD: 4568.77m	Azi: 189.40°
TVD: 2687.1m	Incl: 84.96°

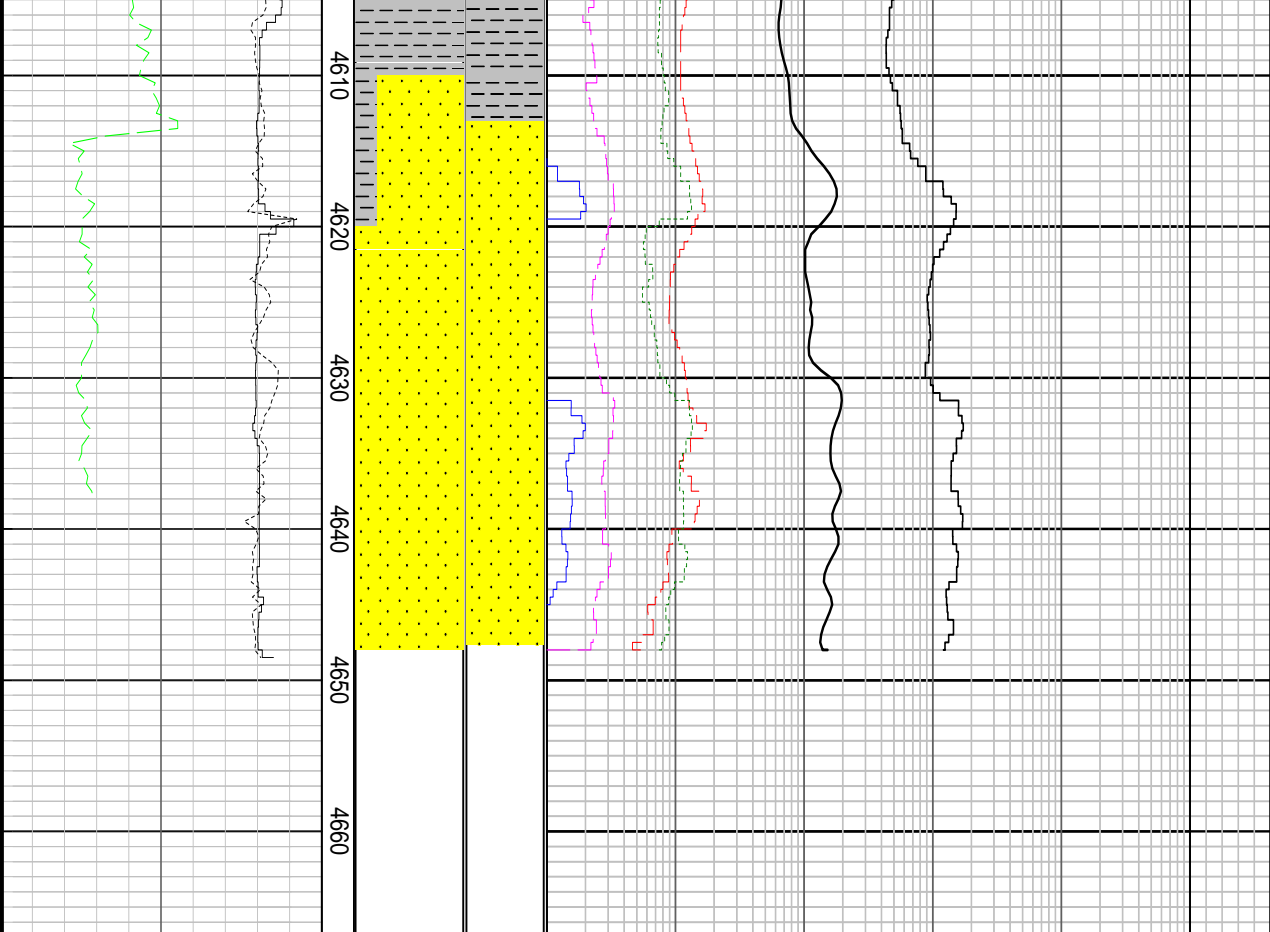
CLYST: brnsh gy, olv gy, frm-hd,
sbbiky-sbang, tr carb mat, n calc, grd
to Slstst

MD: 4598.48m	Azi: 186.02°
TVD: 2689.8m	Incl: 84.84°

WOB: 6-20klbf
RPM: 148-154
GPM: 698-779
SPP: 3420-4060psi

09/08/2008

WOB: 2-20klbf
RPM: 148-154
GPM: 690-779

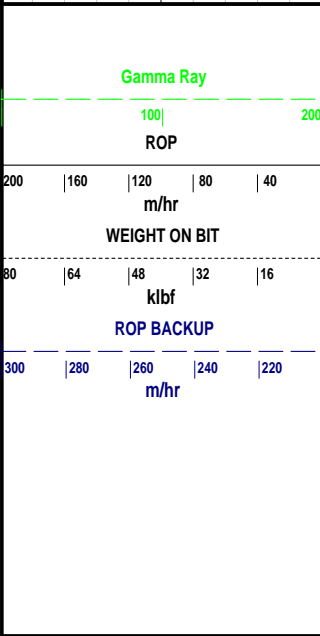


CLYST: brnsh gy, olv gy, frm-hd, sbbiky-sbang, tr carb mat, n calc, grd to Slst

MD: 4627.92m Azi: 185.74°
TVD: 2693.1m Incl: 82.10°

SST: m lt gy-lt gy, occ wh, tr Fe stng, trnsp-trnsl, occ opq, fri-hd, v hd i/p, vf-m gr, sbang-sbrndd, sbsph, pr-mod srt, calc cmt, tr glau, tr arg mtrx, abt coal frag, tr micflam, pr int por, no shw

Longtom-4 H, TD @ 4648.0m
10 Aug 08, 0235 hrs



Cuttings

MD meters 1:500

INTERPRETED LITHOLOGY

FORMATION EVALUATION LOG					
Chromatograph Data					
Methane ppm					
10	100	1000	10000	100000	
Ethane ppm					
10	100	1000	10000	100000	
Propane ppm					
10	100	1000	10000	100000	
iso-Butane ppm					
10	100	1000	10000	100000	
n-Butane ppm					
10	100	1000	10000	100000	
iso-Pentane ppm					
10	100	1000	10000	100000	
n-Pentane ppm					
10	100	1000	10000	100000	
Ditch Gas %					
0.01	0.1	1	10	100	

Analysis

DIRECT FLUOR

LITHOLOGY DESCRIPTIONS